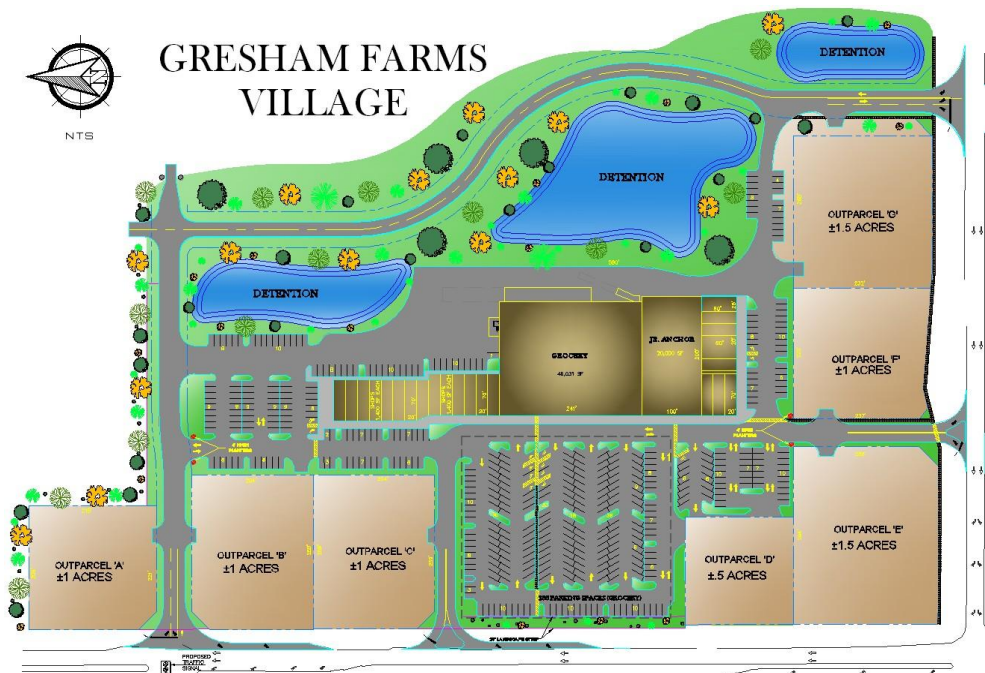


Gresham Farms Village Commercial Development

Lakeland, Florida



The first phase of development is a 22.74 acre, 185,000 S.F. shopping center. Site approved for six out parcels to include drive-thru pharmacy, banks and restaurants. Projected opening date – 2009.

JSK CONSULTING, INC.'s services for this project included extending the City of Lakeland's City Limits to County Line Road, the dividing highway between Hillsborough and Polk County. The City annexed 120 +/- acres and applied Community Activity Center (CAC) for the first phase of development, a 185,000 S.F. retail shopping center. It involved working in conjunction with several local regulatory agencies including: City of Lakeland, City of Plant City, Polk County and Hillsborough County, Polk County, and Southwest Water Management District.

The services we provided including the following:

- *Land Planning, Environmental Services, Traffic Study and Site Layout:* Implementation of the Comprehensive Plan to assign appropriate Land Use Designation for projected and sustainable growth of over 7,000 new homes in the Southwest Lakeland Area.

